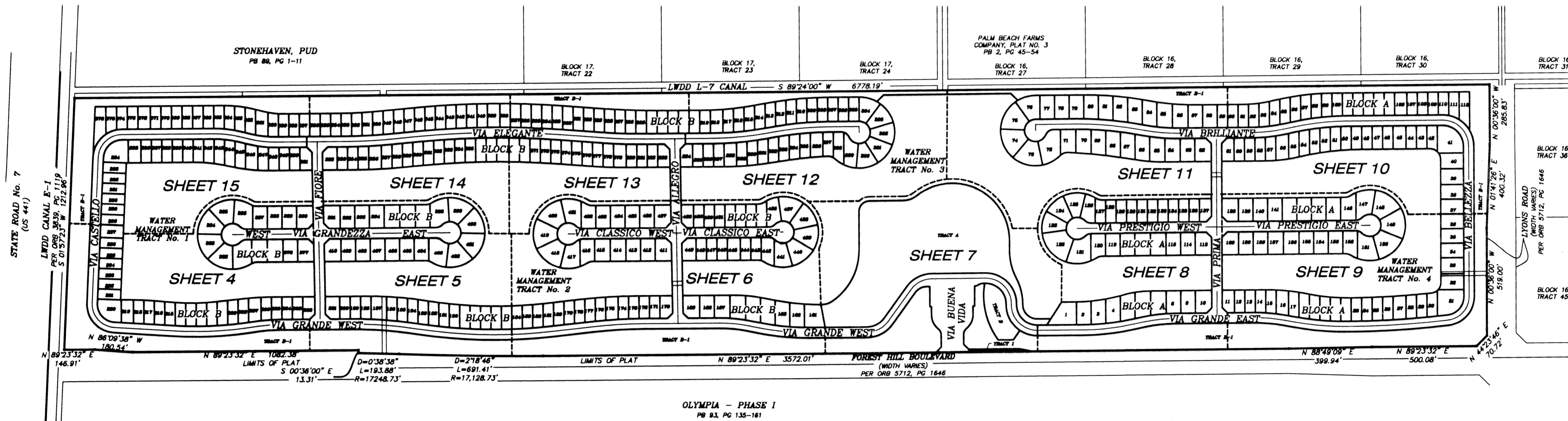
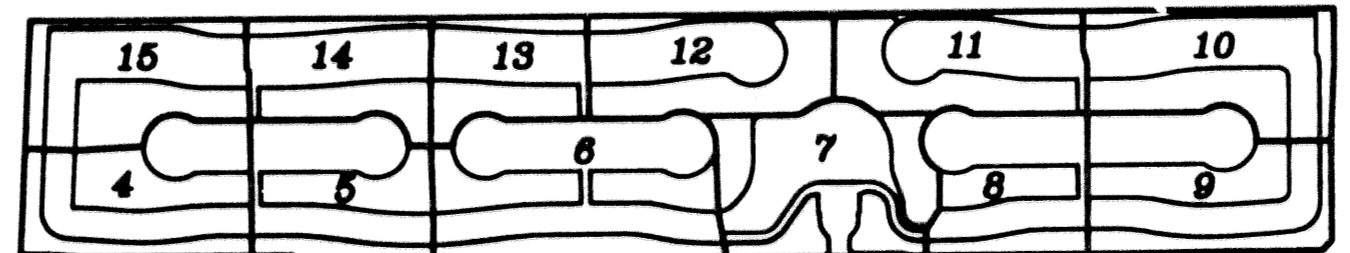
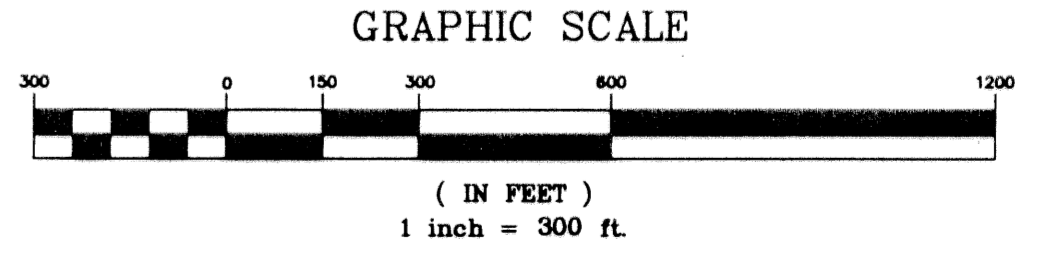


BUENA VIDA
 BEING A REPLAT OF A PORTION OF BLOCKS 16 AND 17 OF PALM BEACH FARMS COMPANY
 PLAT No. 3, AS RECORDED IN PLAT BOOK 2, PAGES 45 THROUGH 54 OF THE PUBLIC
 RECORDS OF PALM BEACH COUNTY, FLORIDA, IN PART OF SECTIONS 7 AND 8, TOWNSHIP 44
 SOUTH, RANGE 42 EAST, VILLAGE OF WELLINGTON, PALM BEACH COUNTY, FLORIDA.
 SHEET 3 OF 15
 MARCH 2002

KEY MAP



LEGEND:
 D= DELTA (CENTRAL ANGLE)
 L= LENGTH
 R= RADIUS
 O.R.B.= OFFICIAL RECORD BOOK
 PG= PAGE
 ■ = PERMANENT REFERENCE MONUMENT "LB 4318"
 (UNLESS OTHERWISE NOTED)
 ● = PERMANENT CONTROL POINT "LB 4318"
 (R)= RADIAL
 - - - MATCHLINE



SHEET INDEX

BUENA VIDA		
	NICK MILLER, INC. Surveying & Mapping Consultants	
	SUITE 105 2560 RCA BLVD. PALM BEACH GARDENS, FLORIDA 33410 TEL. 561 627-5200 FAX 561 627-0983 D.B.P.R. LICENSED BUSINESS No. 4318	
SHEET NO.	3	SCALE: 1" = 300'
		DATE: MARCH 2002
		JOB NO. 1008.09
		FILE: 1008.09